

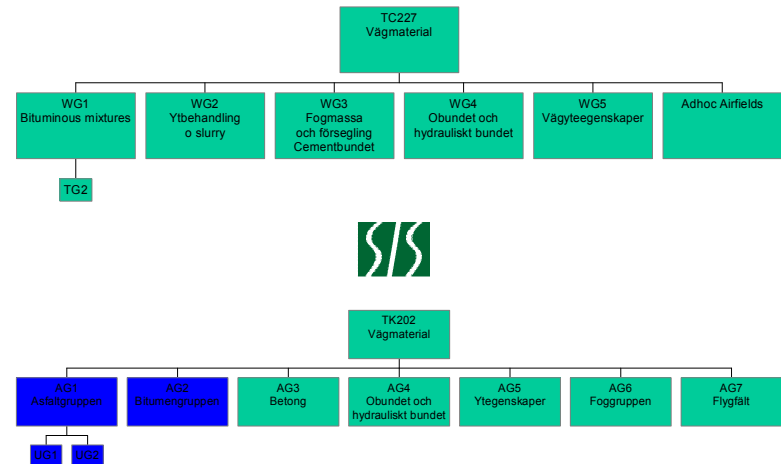
Vad händer sen'?

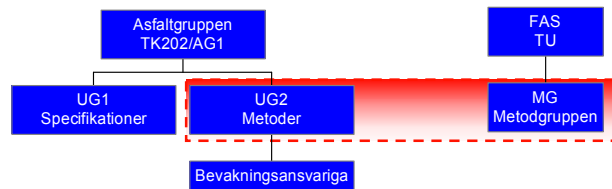


Comité Européen de Normalisation

<http://www.cenorm.be/>

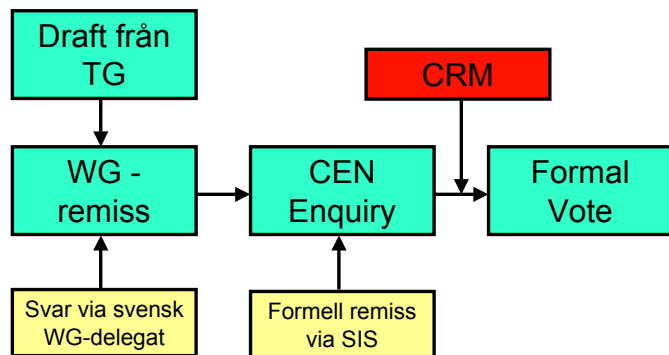
- Austria
- Belgium
- Czech Republic
- Denmark
- Finland
- France
- Germany
- Greece
- Hungary
- Iceland
- Ireland
- Italy
- Luxembourg
- Malta
- The Netherlands
- Norway
- Portugal
- Slovak Republic
- Spain
- Sweden
- Switzerland
- United Kingdom





### Bevakningsansvariga för TC227/WG1-metoder

- Mats Hemmingberg, NCC
- Leif Viman, VTI
- Lisbet Karlsson, NCC
- Björn Kullander, NCC
- Bo Simonsson, VVP
- Kenneth Olsson, Skanska
- Ylva Edwards, KTH
- Safwat Said, VTI
- Åke Sandin, Trafikkontoret GBG
- Thomas Karlsson, Skanska
- Lars Jansson, PEAB



### Etapper för standardiseringsarbetet inom TC227/WG1/TG2

- Draft available for CEN Enquiry – Approval needed from WG1
- Approved draft available – Awaiting issuing for CEN Enquiry
- Draft at CEN Enquiry – Awaiting results
- Draft completed CEN Enquiry – Awaiting proposed actions by TG2
- CEN Enquiry comments actioned – Awaiting Comments Resolution Meeting by WG1
- Draft incorporating Comments Resolution available – Awaiting Formal Voting and/or publication by CEN
- Drafts awaiting publication requiring revision – Proposal requiring agreement from WG1
- Parts published but revisions needed – Agreement required from WG1
- Published – No action required

## Jämförelse mellan CEN och FAS metoder

EN-nr	Bituminous mixtures Material specifications	FAS-metod
13108-1	Asphalt Concrete	----
13108-2	Asphalt Concrete for very thin layers	----
13108-3	Soft Asphalt	----
13108-4	Hot Rolled Asphalt	----
13108-5	Stone Mastic Asphalt	----
13108-6	Mastic asphalt	----
13108-7	Porous asphalt Reclaimed Asphalt	----
<b>Bituminous mixtures – Evaluation of conformity</b>		
13108-20	Compliance with specifications - Type testing	----
<b>Bituminous mixtures - Quality</b>		
13108-21	Factory production control	----

## Jämförelse mellan CEN och FAS metoder

12697-1	Soluble Binder content	FAS 401, 402 - 406, 432, 434, 462
12697-2	Particle size distribution	FAS 221-Kornstorleksfördelning
12697-3	Binder recovery: Rotary evaporator	FAS 419 - Återvinning med rotationsindunstare
12697-4	Binder recovery: Fractionating column	FAS 436 - Extraktion med diklormetan och enkel destillation
12697-5	Determination of the maximum density	FAS 412, 425
12697-6	Determination of bulk density of bituminous specimen by hydrostatic method	FAS 411, 427, 448
12697-7	Determination of bulk density of bituminous specimens by gamma rays	-----

## Jämförelse mellan CEN och FAS metoder

12697-8	Determination of the air voids content of bituminous materials	FAS 413 – Beräkning hålrumshalt
12697-9	Determination of the reference density, gyrator compactor	-----
12697-10	Compactability	-----
12697-11	Determination of the compatibility between aggregates and binders	FAS 455 – Rullflaska
12697-12	Determination of the water sensitivity of bituminous specimens	FAS 446 – Best. vattenkänslighet genom pressdragprovning
12697-13	Temperature measurement	-----
12697-14	Water content	FAS 401, 402, 404

## Jämförelse mellan CEN och FAS metoder

12697-15	Determination of the segregation sensitivity of bituminous mixtures	FAS 435 – Best. separationstalet
12697-16	Abrasion by studded tyres	FAS 471 – Prall
12697-17	Partial loss of PA-specimen	--- ( ≈ Cantabro, utan lösn.medel)
12697-18	Binder drainage from porous asphalt	----
12697-19	Permeability of PA-specimen	----
12697-20	Indentation using cube or marshall specimen	FAS 465 – Best. av stämpeltryck för gjutasfalt
12697-21	Indentation using plate specimens	----
12697-22	Wheel tracking test	----

## Jämförelse mellan CEN och FAS metoder

12697-23 Determination of the indirect tensile strength of bituminous specimens	FAS 449 – Best. av draghållf. genom pressdragprovning
12697-24 Resistance to fatigue	----
12697-25 Cyclic compression test	FAS 468 – Best. av deformations-resistens med dynamisk kryptest
12697-26 Stiffness	FAS 454 – Best. av styvhetsmodul
12697-27 Sampling	FAS 417 - Provtagning asfaltmassa
12697-28 Preparation of samples for determining binder content, water content and grading	FAS 416 - Provberedning
12697-29 Determination of the dimensions of bituminous specimen	Delvis FAS 448

## Jämförelse mellan CEN och FAS metoder

12697-30 Preparation of specimen by impact compactor	FAS 414 – Framställning av provkroppar enligt Marshall
12697-31 Specimen prep., gyratory compactor	----
12697-32 Specimen prep., vibratory compactor	----
12697-33 Specimen prep., slab compactor	----
12697-34 Marshall test	----
12697-35 Laboratory mixing	----
12697-36 Determination of the thickness of a bituminous pavement	----

## Jämförelse mellan CEN och FAS metoder

12697-37 Hot sand test for the adhesivity of binder on precoated chippings for HRA	----
12697-38 Common equipment and calibration	----
12697-39 Binder content by ignition	FAS 476 – Förbränning
12697-40 In situ drainability of PA	----
12697-41 Resistance to de-icing fluid	----
12697-42 Amount of contaminants	----
12697-43 Resistance to fuel	FAS 479 – Cantabro test

När?

2005 ?